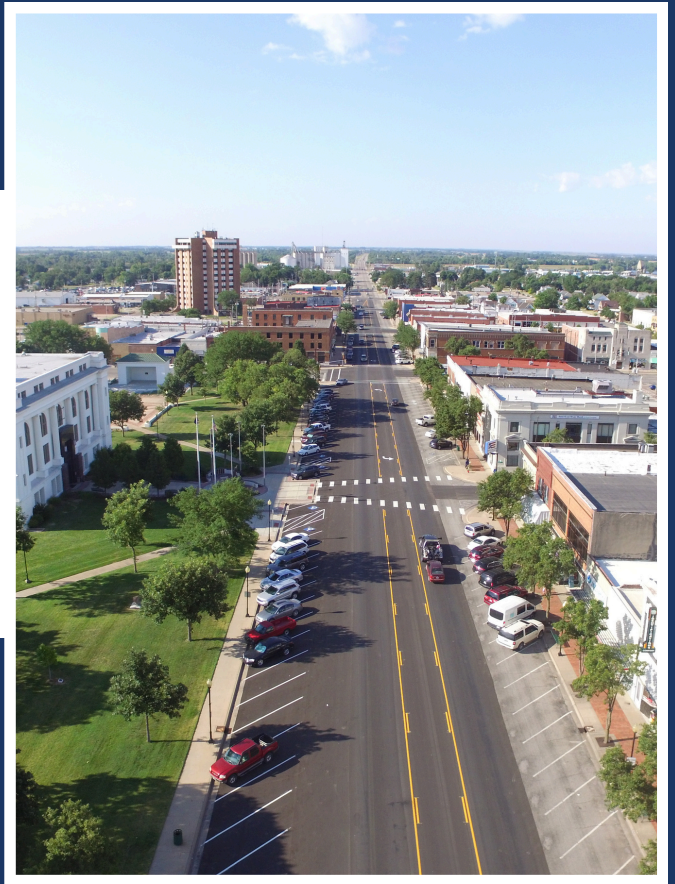




2026



MEETING & EVENT FACILITY GUIDE

THE CITY OF
GREAT BEND

CONVENTION & VISITORS BUREAU

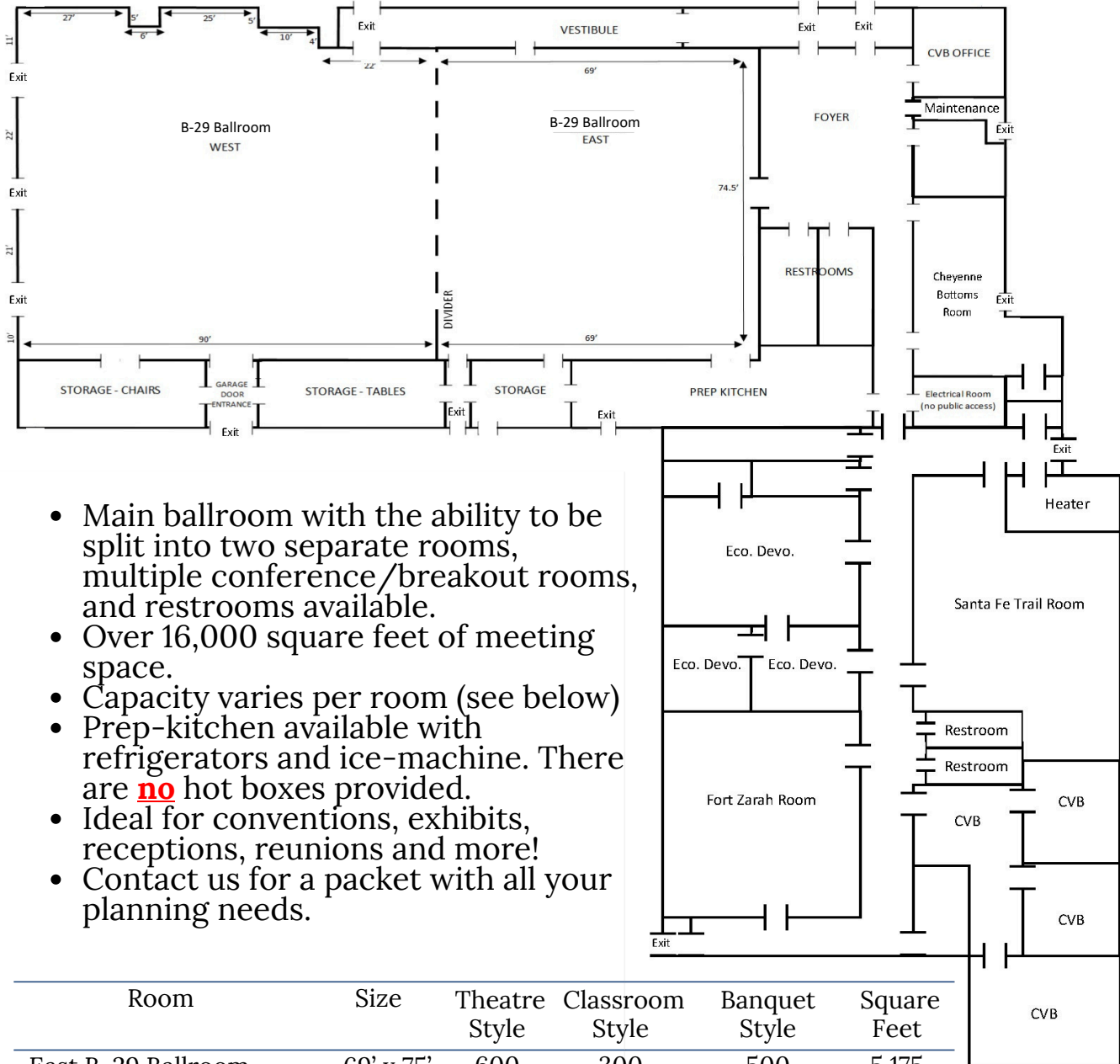
Great Bend Events Center

3111 10th Street

Contact: Convention & Visitors Bureau

Phone: (620) 792-2750

Email: sruble@greatbendks.gov or agaddis@greatbendks.gov



- Main ballroom with the ability to be split into two separate rooms, multiple conference/breakout rooms, and restrooms available.
- Over 16,000 square feet of meeting space.
- Capacity varies per room (see below)
- Prep-kitchen available with refrigerators and ice-machine. There are **no** hot boxes provided.
- Ideal for conventions, exhibits, receptions, reunions and more!
- Contact us for a packet with all your planning needs.

Room	Size	Theatre Style	Classroom Style	Banquet Style	Square Feet
East B-29 Ballroom	69' x 75'	600	300	500	5,175
West B-29 Ballroom	90' x 83'	700	400	600	7,470
Cheyenne Bottoms Room	22' x 41'	40	20	25	902
Santa Fe Room	34' x 36'	70	40	30	1,224
Fort Zarah Room	36' x 44'	80	50	40	1,584

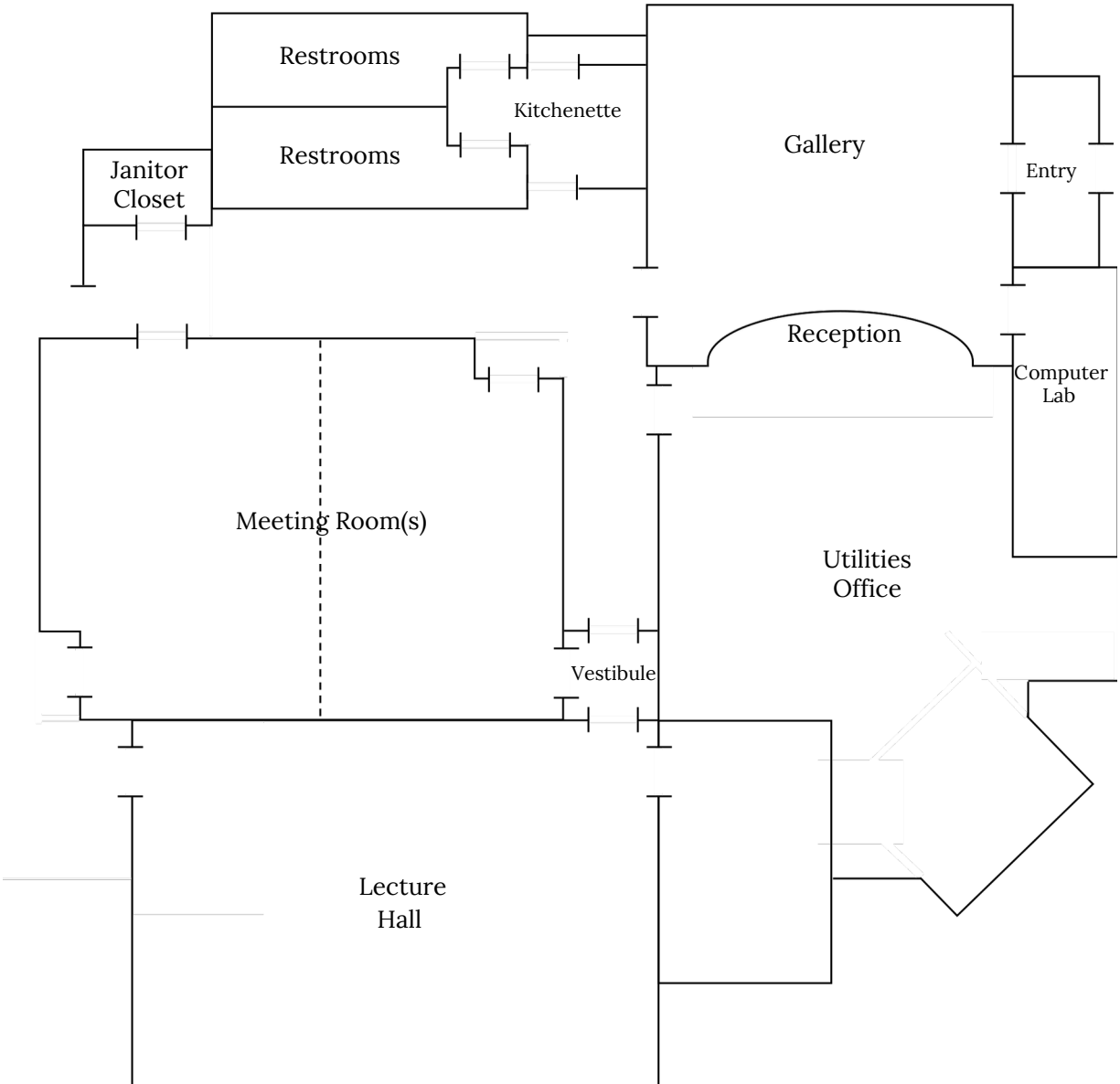
Great Bend Front Door

1615 10th Street

For Booking Contact: (620) 793-4111 or stop in at City Hall 1209 Williams

Email: lhoward@greatbendks.gov

Hours Available: Mon-Fri 8am-5pm



- Lecture Hall
 - Capacity of 30
 - Theatre-style seating
 - Audio and visual equipment available
- Meeting Room(s)
 - Capacity of 45 people, 20 per room with dividers
 - Audio and visual equipment available

Great Bend Meeting Spaces

American Ag Credit

5634 10th Street

Contact: (620) 792-2211

Classroom-style capacity of 30. Tables, chairs, audio, visual equipment available. Restricted to ag-related meetings only.

American Legion

1011 Kansas Avenue

Contact: (620) 793-5912

Meeting spaces available to accommodate up to 250-300 people. The room can be divided into 3 separate spaces.

Best Western Angus Inn

2920 10th Street

Contact: (620) 792-3541

Meeting spaces available to accommodate up to 200 people. Kitchen, game room, pool, and TV capabilities available for additional fees.

Columbus Club

723 Main Street

Contact: Amy Ney (620) 793-3930

Two meeting rooms for up to 70 and a dance hall accommodating up to 300 comfortably. Full service bar and in-house catering available.

Crest Theatre/Great Bend Community Theatre

1905 Lakin Avenue

Contact: Jerry Renk (620) 792-4228

Seating capacity of 700. Sound and light system. Balcony is also available for rent during live shows.

Dry Lake Brewing

1305 Main Street

Contact: (620) 793-0400 or info@drylakebeer.com

Outside normal business hours the whole brewery is available for rental. Indoor seating capacity up to 120. Patio seating for 30, and Event room capacity of 20. Food is welcome to be catered in, we offer a full bar as well as our house brewed beers.

Eagles

1024 Main Street

Contact: (620) 792-4582

Hall space capacity of 200. Tables and chairs available.

Great Bend Brit Spaugh Zoo

2123 Main Street

Contact: (620) 793-4226

Seating capacity of around 40 comfortably. Folding chairs for 40 and 9 tables available.

Great Bend Meeting Spaces

Great Bend Chamber of Commerce

1125 Williams Street

Contact: (620) 792-2401

Spray-Holt Family Conference Room: Seating capacity of 30. Audio and visual equipment available. Upstairs Conference Room: Capacity of 8. Limited audio and visual equipment available.

Great Bend City Auditorium and Recreation Center

1214 Stone Street

Contact: Great Bend Recreation Commission at (620) 793-3755

Auditorium: Seating capacity of 1800 (Balcony seating—900, floor seating—900). Burnside Room and Lounge: Capacity of 120 with tables and chairs, standing capacity of 260.

Kitchen: Capacity of 40 with tables and chairs, standing capacity of 81.

Great Bend Expo I & II Buildings

455 W Barton County Road

Contact: Charles Atkinson (620) 797-3247 email at info@bartoncountyfair.com

Complex - 900,000 square feet of outside, paved exhibit space. Electrical service available to all outside space. RV hook ups available. Adjacent to Professional Rodeo Arena. Expo I: 15,000 square feet of Exhibit Space. Heated, AC, office, concession area, and restrooms. Expo II: 25,000 square feet of Exhibit Space. Concession area and restrooms.

Great Bend Expo III Building

455 W Barton County Road

Contact: Charles Atkinson (620) 797-3247 email at info@bartoncountyfair.com

Expo III: Indoor Arena 150' x 250' with outdoor livestock wash racks.

Great Bend Public Library

1409 Williams Street

Contact: (620) 792-2409

Meeting room in lower level with sink and counter. Available during library hours. Tables and chairs available. Use is limited to public funded and non-profit enterprises.

Great Bend Senior Center

2005 Kansas Avenue

Contact: (620) 792-3906

Meeting room capacity of 147. Tables and chairs available .

Heartland Center for Spirituality

3600 Broadway Avenue

Contact: (620) 792-1232

Meeting room capacity of 30. Auditorium capacity of 75. Tables and chairs available. 43 sleeping rooms available - 19 of the rooms have 2 beds.

Great Bend Meeting Spaces

Holiday Inn Express

3821 10th Street

Contact: (620) 603-6565

Meeting room capacity of 60; available for multiple set ups. Projector is available.

Board meeting room capacity of 12. 60" smart TV available with or without wireless hookup.

Kansas Oil and Natural Gas Museum

5944 W 10th Street

Contact: (620) 793-8301

Meeting room capacity of 80. 6 foot and 8 foot rectangle tables and chairs available.

National Guard Armory

9571 B-29 Way

Contact: (620) 793-9366

Classroom 25' x 75' can be divided into 2 rooms. Gym also available. Chairs and tables available.

Perkins Restaurant and Bakery/The Page

2920 10th Street

Contact: (620) 792-4386

3 meeting rooms, occupancy based on set-up style. The Sunflower Room seats 32-80, the Derrick Room seats 38-90, and the Kansas Room seats 75-200

Renue Salon, Spa, & Fashion Boutique

1419 Main Street

Contact: (620) 792-2086

Event room available for receptions, showers/celebrations, special events, conferences, meetings, workshops/classes, and more!

The Gathering Place

1037 Sheridan Street

Contact: Tammy Rosenberg at (620) 285-9114

Meeting room capacity of 50. Tables, chairs, refrigerator and microwave are available for use.

Meeting Spaces Outside City Limits

Barton County Community College

245 NE 30th Road

Contact: Heather Helvie at (620) 792-9340

A variety of facilities available to rent: general classrooms, meeting rooms, chapel, gymnasium, auditorium, and swimming pool.

Barton County Historical Society

85 S Highway 281

Contact: (620) 793-5125

Seating capacity of 50. Tables, chairs, audio, visual, and projector screen available.

Black Walnut - Event Venue and Storage

292 NE 10 Ave.

Contact: Brandon Chansler (620) 617-3410 or Matt Suchy (620) 617-3059, email blackwalnutmb@gmail.com

Located just outside of Great Bend, we look to accommodate weddings and events for an easy one stop shop weekend experience. Currently building a 67'x84' event space coupled with a fully furnished house that sleeps 9 plus for the wedding party and family.

Camp Aldrich

884 NE 110 Ave, Claflin, KS

Contact: Heather Helvie at (620) 792-9340

Dining & Events Center with banquet setting for 300 people upstairs and a meeting room in the basement that will accommodate 150 people. To aid in your presentations or programs, audio-visual equipment is available upon request. A fully equipped, industrial kitchen and covered patio featuring two large barbecue grills.

Corinthians Hill Event Center

464 NE 20 Ave.

Contact: (620) 793-7921 or (620) 786-0257

Offering countless interior and exterior opportunities for weddings or any event! The team can and will make all of your visions come to life! For more rental information, visit corinthianshilleventcenter.com, or for information on rental décor, visit www.weddingsbycornerstone.com.

Kansas Wetlands Education Center

592 NE 156 Highway

Contact: Curtis Wolf at (877) 243-9268

Classroom: Capacity of 35. Tables and chairs available. Auditorium: Capacity of 70. Stadium Style. Exhibit Gallery: Capacity of 95 with limited seating. Capacity of 45 with tables and chairs. Audio and visual equipment available.

Kansas Trophy Experience

54 SE 10 Road

Contact: 620.786.1482

The perfect crash pad for all of your game pursuits, bachelor/bachelorette parties, wedding party, family reunions, corporate/church retreats and so much more. Grab the entire crew, including the 4-legged friends, for a stay at this newly-built cabin paradise! Just outside of Great Bend, 'Kansas Trophy Experience', an 8-bedroom (2 full-sized beds per bedroom), 4.5-bath vacation rental. On-site, you'll find 20 acres with plenty of wildlife viewing opportunities from the covered patio. KTE is located between two of the largest wetlands in the United States - Cheyenne Bottoms and Quivira National Wildlife Refuge.

Local Churches	Address	Phone
Asamblea Apostolica De La Fe En Cristo Jesus	3920 Forest Avenue	(620) 603-3044
Bible Holiness Church	502 Stone Street	(620) 603-6632
Central Baptist Church	3301 Lakin Avenue	(620) 793-8491
Church of Christ	1122 Stone Street	(620) 792-4647
Community Christian Church	253 NE 30 th Road	(620) 792-8215
Crosspoint Church	57 SE 20 Road	(620) 796-2202
Crosswinds of Kansas Bikers Church	1219 Main Street	(620) 282-1908
Encounter Church	601 Patton Road	(620) 792-5211
Faith Community Church	293 W Barton Co. Road	(620) 793-8084
First Baptist Church	1601 19 th Street	(620) 792-3894
First Christian Church	5962 4 th Street	(620) 792-2936
First Church of God	1224 Baker Street	(620) 793-5231
First Church of Nazarene	4811 Broadway Avenue	(620) 793-6139
First Congregational United Church of Christ	3400 21 st Street	(620) 792-5346
First Presbyterian Church	2400 Washington Avenue	(620) 792-2594
First Southern Baptist Church	3301 19 th Street	(620) 793-8444
First United Methodist Church	2123 Forest Avenue	(620) 792-2148
Foundry Methodist Church	5401 Broadway Avenue	(620) 793-3327
Grace Community Church	210 McKinley Street	(620) 792-7814
Heartland Community Church	4907 10 th Street	(620) 603-6061
Heritage Baptist Church	2000 Monroe Street	(620) 793-9990
Iglesia de la Cosecha	222 Frey Street	(620) 514-0388
King United Methodist Church	1608 Odell Street	(620) 793-6778
Kingdom Hall of Jehovah's Witnesses	3205 Williams Street	(620) 792-4062
Myers Chapel AME Church	1511 9 th Street	(316) 792-3865
Prince of Peace Parish: St. Patrick Church	4100 Broadway Avenue	(620) 792-1396
Prince of Pease Parish: St. Rose of Lima Church	1424 Baker Street	(620) 792-1396
Seventh-Day Adventist Church	7 SW 30 Avenue	(620) 793-5096
St. John's Episcopal Church	2701 17 th Street	(620) 792-6011
St. Mark Lutheran Church	2101 Jackson Street	(620) 792-4796
The Church of Jesus Christ of Latter Day Saints	5851 Eisenhower Avenue	(620) 793-7328
The Cornerstone Fellowship	1609 24 th Street	(620) 792-7852
Trinity Lutheran Church	2701 24 th Street	(620) 793-7894
Trinity United Methodist Church	5700 Broadway Avenue	(620) 793-6016

Great Bend Hotel Options



Baltzell Lodge
705 10th Street
Contact: (620) 792-4395
Book On: www.baltzellodge.com



Best Western Angus Inn
2920 10th Street
Contact: (620) 792-3541
Book On: www.bwangus.com



Big Bend Traveler's Inn
4200 10th Street
Contact: (620) 793-5448
Book On: www.travelersbudgetinn.net



Days Inn
7470 10th Street
Contact: (620) 322-4068
Book On: www.wyndhamhotels.com



Frontier Inn
3200 10th Street
Contact: (620) 792-7219
Book On: www.expedia.com



Holiday Inn Express
3821 10th Street
Contact: (620) 603-3535
Book On: www.ihg.com



Quality Inn Express
3500 10th Street
Contact: (620) 793-8486
Book On: www.choicehotels.com



Super 8
911 Grant Street
Contact: (620) 793-9000
Book On: www.wyndhamhotels.com