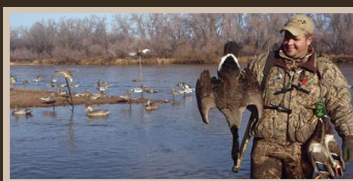
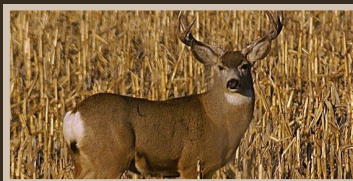
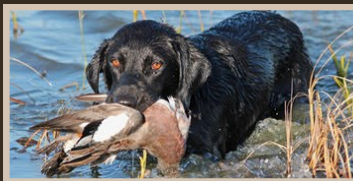
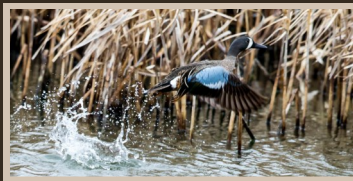
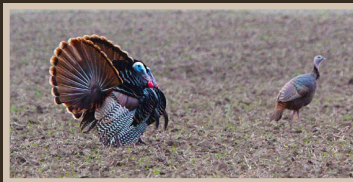


# WINTER 2019

## GREAT BEND KANSAS



## HOTELS



**Baltzell Lodge**  
705 10th St.  
(620) 792-4395

Cleaning Station Available



**Best Western Angus Inn**  
2920 10th St.  
(620) 792-3541

Cleaning Station Available



**Days Inn**  
4701 10th St.  
(620) 792-8235



**Holiday Inn Express**  
3821 10th St.  
(620) 603-6565



**Quality Inn**  
3500 10th St.  
(620) 793-8486



**Super 8**  
911 Grant St.  
(620) 793-9000



**Traveler's Budget Inn**  
4200 10th St.  
(620) 793-5448

Cleaning Station Available



**Travelodge**  
3200 10th St.  
(620) 792-7219

THE CITY OF  
**GREAT BEND**

CONVENTION & VISITORS BUREAU

3111 10th Street  
Great Bend, KS 67530  
(620) 792-2750

[www.visitgreatbend.com](http://www.visitgreatbend.com)

## LICENSE & PERMIT AGENTS

**Barton County Clerk**  
1400 Main St.  
Room 202  
(620) 797-9957

**Sutherlands**  
5520 10th St.  
(620) 792-2900

**P&S Security**  
255 W Barton Co. Rd.  
(620) 796-2133

**Wal-Mart**  
3503 W 10th St.  
(620) 792-3632

**Smokin' Aces**  
268 S Hwy US-281  
(620) 603-6034

## SUPPLIES

**BIG Wings**  
1201 Polyantha  
(316) 393-6890  
(620) 797-9957

**P&S Security**  
255 W Barton Co. Rd.  
(620) 796-2133

**Gunslinger Mercantile**  
2407 10th St.  
(620) 793-4867

**Shooter Supply**  
1108 Main St.  
(620) 792-3818

**Hibbett Sports**  
3709 10th St.  
(620) 603-6034

**Smokin' Aces**  
268 S Hwy US-281  
(620) 792-2585

**Magnus Outdoor Products**  
\*Broadhead Manufacturer Only  
800 Washington St.  
(620) 793-9222

**Sutherland**  
5520 10th St.  
(620) 792-2900

**Orscheln Farm and Home**  
5320 10th St.  
(620) 792-7700

**Tractor Supply Company**  
3709 8th St.  
(620) 792-5500

**Wal-Mart**  
3503 W 10th St.  
(620) 792-3632

# YOUR PERFECT HUNTING DESTINATION

Nestled in between Cheyenne Bottoms Wildlife Area and Quivira National Wildlife Refuge, and surrounded by ample public Walk-In Hunting Areas within a 60 mile radius, Great Bend is a great hunting destination for you to explore.



With diverse waterfowl and upland game in the area and plenty of lodging and dining options, Great Bend is the perfect fit for you this hunting season!

**COME FOR THE HUNTING,  
STAY FOR THE HOSPITALITY**

# SEASONS SAMPLE

## Dove

09/01/19-11/29/19

**Daily Bag Limit:**

Varies by Species

**Possession Limit:**

Varies by Species

## Dark Goose

10/26-27/19;

11/06/19-02/16/20

**Daily Bag Limit:** 6

**Possession Limit:** 18

## Deer

**Archery Season:**

09/16/19-12/31/19

**Regular Firearm**

**Season:**

12/04/19-12/15/19

## Duck

**Early Zone:**

10/12/19-12/08/19;

12/14-29/19

**Late Zone:**

10/26/19-12/29/19;

01/18-26/20

**Daily Bag Limit:**

6 (species vary)

**Possession Limit:**

Three times the daily bag limit



## Light Goose

10/26-27/19;

11/06/19-02/16/20

**Daily Bag Limit:** 50

**Possession Limit:**

Unlimited

## Pheasant

11/09/19-01/31/20

**Daily Bag Limit:**

4 cocks

## Quail

11/09/19-01/31/20

**Daily Bag Limit:**

8 single species or in combination

## Sandhill Crane

11/06/19-01/02/20

**Daily Bag Limit:** 3

**Possession Limit:** 9

## Special Teal

09/14-29/19

**Daily Bag Limit:** 6

**Possession Limit:** 18

## Turkey

**Regular Fall**

**Archery & Firearm**

**Season:**

10/01/19-12/03/19;

12/16/19-01/31/20

**Both Seasons'**

**Limit:** 1 turkey,

either sex, per

permit

# HUNTING GUIDE SERVICES

**Central Kansas  
Whitetails**  
656 W Barton Co. Rd.  
Great Bend, KS  
(620) 786-4064

**Prairie Thunder  
Outfitters**  
606 NE 110 Ave.  
Ellinwood, KS  
(785) 252-7217

**Innovative Outfitters**  
6 NE 20 Rd.  
Great Bend, KS  
(620) 282-2674

**Six Star Outfitters**  
2211 Jackson St.  
Great Bend, KS  
(620) 282-1561

**No Limits  
Kennels, LLC  
Hunting**  
423 Walnut St.  
Heizer, KS  
(316) 210-6911  
Right photo credit: JC Bosch



# CHEYENNE BOTTOMS

**Headquarters/  
Check Station:**  
204 NE 60 Road  
**Area Office Phone:**  
(620) 793-3066

**24 Hour Current  
Conditions Phone:**  
(620) 793-7730  
**Jason Wagner,  
Manager**

Don't forget about the iSportmans digital check-in! Visit [kdwpt.isportsman.net](http://kdwpt.isportsman.net) to register or login before your hunt.

For more information or to receive a copy of the 2019 Kansas Hunting & Harvesting Regulation Summary or 2019 Kansas Hunting Atlas booklets, please contact the City of Great Bend CVB by stopping in 3111 10th Street or calling (620) 792-2750.

Explore  
**GREAT BEND**  
Shop · Stay · Play · Grow